



# PRODUCT CATALOG

2024

# FROM OUR TEAM, TO YOURS

---

Inclusion Solutions is your partner in the election space. We have been working with election officials for over 23 years to provide a comprehensive suite of products and services to aid in a successful election. It is our goal to make your job easier, as the pressures in the industry continue to grow. **Our Franklin 4-Station Booth (America's favorite), ballot boxes, signs, bags, and accessories have been designed to make your job easier.** We are proud that our **accessibility solutions are universally designed**, ensuring an equal voting experience for all. Thank you for the trust you have shown Inclusion Solutions. **Our promise is to continue to listen to you, to provide best-in-class products, and to be there for you.**

Sincerely,  
Hollister Bundy and the Inclusion Solutions Team



**HOLLISTER BUNDY**  
*PRESIDENT*



**SHEILA HUGHES**  
*CHIEF OPERATING OFFICER*



**CLARK FETRIDGE**  
*VICE PRESIDENT*



**JAMES YOUNG**  
*DIRECTOR OF SALES,  
STRATEGIC PARTNERSHIPS*



**DAWN BETZ**  
*CUSTOMER SERVICE*



**CHRIS ERNST**  
*WAREHOUSE MANAGER*

<b>03</b>	<b>Voting Booths</b> MXB Dual-Sided Booth Franklin 4-Station Booth Frankie Single Booth
<b>07</b>	<b>Accessories for Your Equipment</b> ES&S Hart Dominion KnowInk
<b>11</b>	<b>Displays &amp; Signage</b> Totem Displays Stand Up Signs Mini Signs Slide Signs Feather Flags Retractable Banners Cone Cap Signs Yard Signs
<b>15</b>	<b>Ballot Boxes</b> Fortress Ballot Boxes Orion Ballot Boxes Outdoor Ballot Boxes
<b>18</b>	<b>Alert Systems</b> BigBell Max BallotCall Max
<b>19</b>	<b>Ramps &amp; Bevels</b> ElectionSeries Ramps SignatureSeries Ramps Bevels
<b>21</b>	<b>Matting</b> VersaMat AccessMat Rubber Matting
<b>22</b>	<b>Remote Video Interpreter MVP System</b> Multi-lingual Virtual Polling System



# GET TO KNOW OUR VOTING BOOTHS

Inclusion Solutions provides America's finest voting booths. Our Franklin 4-Station, Franklin Jr. Adjustable Booth, and MXB booths are all top-of-the-line and feature ultra-durable construction, universal design, and fold flat for simple storage.

Our booths are ideal for paper-based voting and machine voting alike. Fit your equipment from leading voting machine manufacturers on our durable and adaptable shelves.

With accessories, add-ons, replacement parts, and additional booth options, we are your one-stop source for booths.

## LOOKING FOR MORE?

Visit our website to view more booth options, including temporary booths and countless booth accessories.



FRANKLIN®  
VOTING BOOTH





# MXB® Dual-Sided

## Paper and BMD Compatibility

- Supports ExpressVote, Unisyn, and ClearBallot
- Private cubicles offer standing or seated access
- Robust construction is damage resistant

## Modular Design Adjusts to Your Needs

- Customize your booth with a-la-carte items
- Assembles in minutes, no tools necessary
- Custom branding options available
- Visors extending height to 6.6" tall

### MXB® Voting Booth

MXB \$779



# MXB-ICX® Machine Compatible

## Supports ALL of Your Equipment

- Tablet sits securely on the main booth shelf
- Printer rests on separate, easily accessible shelf
- Standard shelves support 80 lbs
- Use both sides for machine or paper ballots

### MXB® ICX Voting Booth

MXBICX \$809

Compatible with your  
ICX Machine



VOTING BOOTHS



### Cardboard Voting Booth

Low-cost and ideal for one-time use. Sets up in seconds, disposable.

CBBOOTH \$22



### PollStar Booth

Lightweight, 10 lb/unit, all parts packaged in custom booth.

PS Regular Booth \$170  
PSA Accessible Booth \$190



### Model 2000 Booth

Self-contained voting booth in a durable plastic suitcase

M2AHC Regular Booth \$245  
M2AHCL Accessible Booth \$255



# Franklin® 4-Station Booth

Exclusive to Inclusion Solutions, the PakFlatt 4-Station Franklin® booth is the top booth choice for our customers nationwide.

## Accessible and ADA-approved

- Universal design: all voters vote at the same booth
- 3 standing height shelves with 1 ADA station
- 4 standing height shelves also available
- Eligible for accessibility grants

## Simple Storage and Setup

- No pieces to lose - all booths are self contained
- Packs up small - 70% smaller footprint than other booths

## Proven Nationwide

- Over 50,000 Franklin® booths in use across the USA
- Used in 48 States (and counting!)
- Consistently ranked as “Best Booth Experience” among Election Officials, voters, and poll workers

## A More Efficient Approach to Voting

- 4 stations in a single unit means reduced lines and wait times
- Can support paper ballots or machines, all in 1 booth
- Can be set up as 2, 3, or 4 stations depending on your configuration

Franklin® Voting Booth  
4SFRKLN \$999



Folds up small for  
easy storage



### ACCESSIBLE

Universally designed for all voters



### PRIVATE

Additional privacy curtains and visors are simple to install



### DURABLE

Sturdy shelves support your voting equipment



# Frankie® Single Booth

The single-station version of the Franklin®, the Frankie® is a one-piece voting booth design that adjusts from standard to accessible in seconds.

## Two Booth Capabilities - In One Booth

- Telescoping legs allow for ADA and standard heights
- Can tuck into a corner or complement existing booths
- Eligible for accessibility grants

## Frankie® Jr. Single Booth

FRKJR \$429



## FRANKLIN® ACCESSORIES



### Franklin® Privacy Wings

Easy to install banners add privacy to your Franklin® booth. Each set includes (2) banners per station (8 banners total), including a set marked with the accessibility symbol.

4SWING \$140



### Franklin® Privacy Curtains

Curtains surround booth to provide even more privacy to your Franklin® booth. Simple setup with curtains that snap into place. Each set includes 4 blue and 4 red curtains, rods, and carrying bag.

4SCURTAIN \$299



### Clip-On Voting Booth Lights

Flexible light affixes to any voting booth or election system.

FLEXLT-4 \$115 (4 pack)



### Visor Pockets

Pockets attach to Franklin® visor for printed materials

4SVPKT \$55



### Storage and Transfer Box

Store, transport, and protect your Franklin® booth.

4SCOV \$40



### Franklin® Replacement Parts

4SWHEEL \$8      4SCAP \$5

4SGUIDE \$5      4SFEET \$5



### Franklin® Voting Chair

Chair accommodates voters with and without disabilities.

FRKCHR \$55



### Franklin® Protective Cover

Tear-resistant cover protects Franklin® booth during storage.

4SCOV \$40

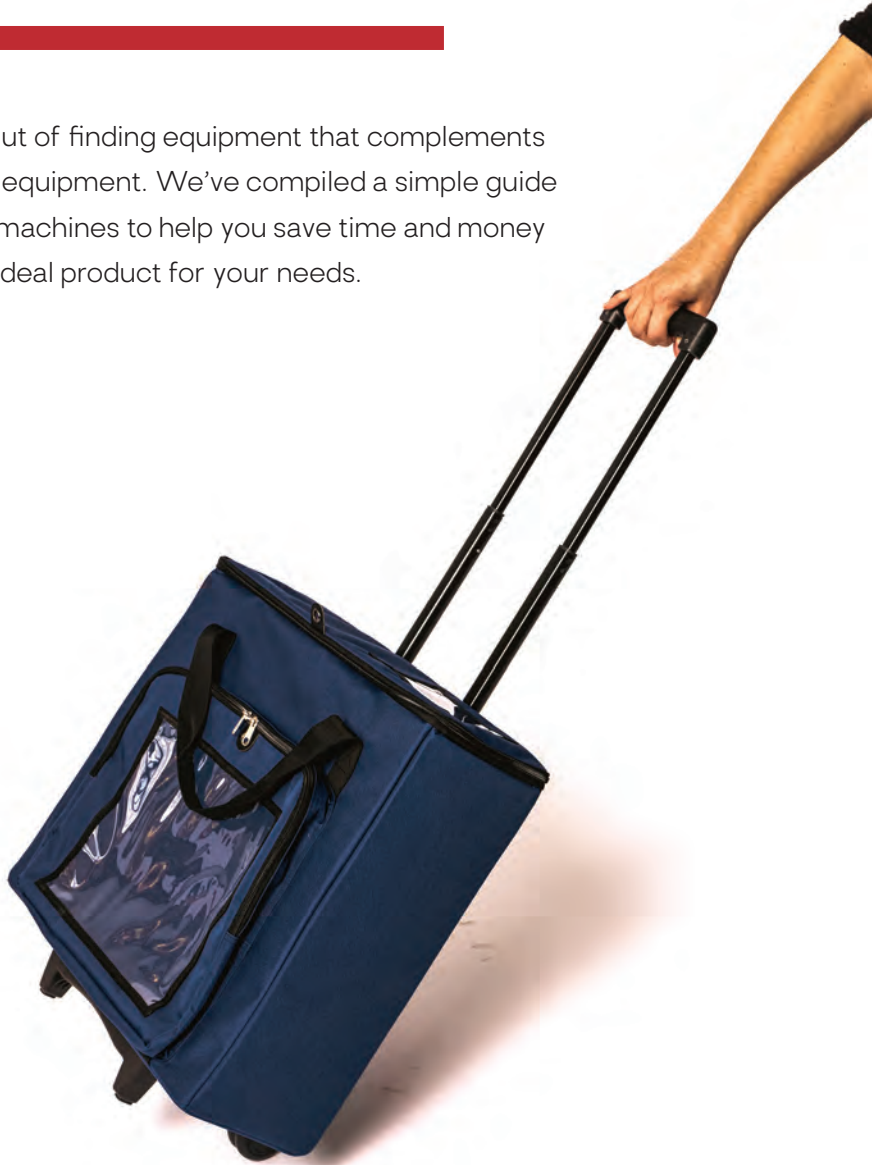
VOTING BOOTHS



# ENGINEERED FOR ELECTION DAY

---

Take the guesswork out of finding equipment that complements your existing election equipment. We've compiled a simple guide based on your voting machines to help you save time and money when looking for the ideal product for your needs.



## LOOKING FOR MORE?

Explore our large selection of bags and accessories that pair perfectly with your equipment on our website.





compatible with your **ES&S** equipment



### Franklin® Booth with ExpressVote® Bracket

Custom shelf adapter allows for ExpressVote® machines to be secured to the individual booth stations on your Franklin® booth. Exclusively designed for your ExpressVote® machines, the adapter attaches within seconds.

**4SBRKT-EX \$99** (Bracket Only)

**FRKLN + 4SBRKT-EX \$1098** (Franklin + ExpressVote)



### MXB® with MXB® ExpressVote® Bracket

Custom shelf adapter allows for ExpressVote® machines to be secured to the individual booth stations on your Franklin® booth. Exclusively designed for your ExpressVote® machines.

**MXB-BRKT \$50** (Bracket Only)

**MXB + MXB-BRKT \$829** (MXB + ExpressVote)



### ExpressVote® Trolley

Designed to the specifications of your ES&S ExpressVote®, and exclusive to Inclusion Solutions, protect your precious and expensive equipment with a durable, seal-able, and discreet bag. Rugged wheels allow workers to easily transport heavy machinery with ease.

**EV BAG \$119**



### DS200 Ballot Collection Bag

4-Wheel collapsible, sealable bag with keyless security fits snugly inside ES&S DS200.

**DSBCB \$289**



### ExpressVote® Privacy Screen

Corrugated plastic privacy screen for your ExpressVote® machines. Can be used either as a standalone screen, on a table, or on your MXB voting booth. Easily assembled, and folds flat for easy storage.

**EX-CANOPY \$59**

ACCESSORIES FOR YOUR EQUIPMENT





compatible with your **HART VERITY** equipment



**Franklin Voting Booth**

Our durable booth pairs perfectly with Hart's Verity System. (see page 3 for details)

4SFRKLN \$999



**Verity Trolley**

Collapsible 4-Wheel Precinct Supply Trolley is the durable option for storing your supplies when not in use. The large zippered opening allows this to work as a ballot catcher inside the Hart Verity Scan Machine, making this product a multi-use must-have for your precinct.

4220EEB \$125



**2-Wheel Verity Printer Trolley**

This sturdy bag houses virtually all HART Verity printers. Secure up to 150lbs of supplies or voting machines on top with build in buckle straps.

2217BEB-PR \$110

compatible with your **DOMINION** equipment



**ImageCast Ballot Catching System**

Our ballot catching system allows bag to be resting at the same level as the door of your ImageCast opening for easy access in and out. Includes floating floor for easy collection.

B15909-YK1-82CC \$255



**MXB-ICX**

Our rugged, two-sided booth is the perfectly engineered for the Dominion ICX with the addition of a sturdy lower level to hold your printers. (see page 4 for details)

MXBICX \$809

compatible with your **KNOWiNK** equipment



### Poll Pad Transport Trolley

Exclusive to Inclusion Solutions, our trolley makes it easier than ever to transport your KNOWiNK Poll Pads. Trolley holds up to four cases, and is fully seal-able and secure.

**B15969-YAB-82CC \$349 (bulk discount available)**



### E-Poll Book Trolley (22")

Consolidate your laptop and supplies in one bag. This trolley was made to hold a range of poll books and supplies.

**5222BEB-CC \$185**

## MORE ELECTION BAGS



### Collapsible Supply Bag

Transport up to 50 lbs of supplies and ballots in this sturdy bag

**B15622-Y10-82NB \$299**



### Precinct Supply Trolley

24" large capacity holds 2500+ ballots or supplies

**5224CEB \$195**



### Self-Standing Ballot Bag

Molded ballot slot allows for secure voting. Available in small or medium.

**12-182206KBB-M \$65**

**12-182206KBB-S \$49**



### Large Folding Ballot Box

Securely transport sensitive documents and memory modules.

**1224NBB \$65**



### Keyless Security Pouch

Tamper-evident protection for sensitive equipment.

**B00432-C14-82CC \$35**



### Ballot Return Bag

Transport and secure ballots in this durable bag.

**11-201103BB \$14**



### Ballot Transfer Bag

Hold voted or unused ballots in this secure and durable bag.

**122OUBB \$50**



### Ballot on Wheels

Stocked in tourquoise and yellow, other colors avail. upon request.

**9217TEB \$155**



### Expandable Ballot Bag w/ Slot

Used to collect voted ballots at your polling centers.

**B15373-U11-82CC \$58**

ACCESSORIES FOR YOUR EQUIPMENT



# UNIVERSAL ACCESS MADE VISIBLE

Transform your space into an engaging and organized environment with our range of Signage and Displays that are both visually appealing and functionally essential. Our versatile display options cater to various settings, including election sites, offices, schools, and public spaces.



STAND UP  
SIGNS

## LOOKING FOR MORE?

Explore an extensive range of sign options on our website, designed to elevate your visual communication to the next level.



# Totem<sup>®</sup> Pocket Display

Simple pop-up sign mounting systems are ideal for Election Day use with ever changing signage needs. Folds flat for easy storage.

## Fully Customizable for Your Needs

- Clear pockets allow you to interchange your signage
- Includes 1 small pocket, and 3 large pockets per side
- Extremely lightweight for handling ease
- Robust interior skeleton for election after election use

## Choose from Multiple Options

- Single-Sided: Includes 1 small pocket, and 3 large pockets
- Double-Sided: Includes 2 small pockets, and 6 large pockets



### Totem<sup>®</sup> Pocket Display

TOTPKT1 \$105

TOTPKT2 \$125



Additional pockets and configurations available!

DISPLAYS + SIGNAGE

## SPECIALTY TOTEMS AND ACCESSORIES



### Totem X<sup>®</sup> Display System

64" H x 34" W canvas display. Durable fabric and vinyl design includes 12 legal-sized, heavy-duty, clear pockets sewn onto canvas. Tripod stand includes storage bag for transport.

TOT-X \$149



### Totem<sup>®</sup> Protective Bag

Protect your Totem with this heavy-duty bag. Includes exterior slot for precinct data.

TOT-BAG \$30





### Stand Up Signs

Affordable, easy to use yard signs are perfect for election day. Weatherproof corrugated plastic with metal frame included. All signage is customizable at no charge, inquire for details.

45"H X 25"W

#### Stand Up Sign, One-Sided

SUS1 \$125

#### Stand Up Sign, Two-Sided

SUS2 \$155

#### Additional Interchangeable Sign Face

SUSFACE \$46



### Mini Signs

A smaller, narrower version of our Stand Up Sign. All signage is customizable at no charge, inquire for details.

36"H X 13"W

#### Mini Sign, One-Sided

MINISUS1 \$80

#### Mini Sign, Two-Sided

MINISUS2 \$105



### Large Slide Signs

Lightweight, portable plastic signs with space to slide in your signage - no velcro, clips, or latches needed.

37.25"H X 24.375"W X 2"D

#### Large Slide Sign, One-Sided

SLSG1 \$125

#### Large Slide Sign, Two-Sided

SLSLG2 \$150



### Small Slide Signs

A smaller version of our Large Slide Sign.

30.5"H X 26"W X 2"D

#### Small Slide Sign, One-Sided

SLSSM1 \$80

#### Small Slide Sign, Two-Sided

SLSSM2 \$105



### Feather Flags

Fully customizable at no extra charge, our Feather Flag kits include the flag of your choice, pole, and ground stake. Deluxe kits come with custom carrying case and flags are made with heavy-duty weather-resistant material.

#### 9-Foot Deluxe Feather Flag Kit

DFTHR9 \$199

#### 12-Foot Deluxe Feather Flag Kit

DFTHR12 \$240

#### 15-Foot Deluxe Feather Flag Kit

DFTHR15 \$320

#### Deluxe Feather Flag Add-on Cross Stand

DFFSTAND \$55



### Retractable Banner with Stand

Customizable banner signs for precinct and line information. Pricing for single-sided, call for double-sided pricing.

78"H X 33.5"W

RETBNR \$219



### Cone Cap Signs

Signs are custom-cut to sit snugly in a cone. Choose from our Ultra-Durable PVC option, or our temporary budget option, ideal for indoor use. (Cone not incl.)

#### One-Sided Cone Cap Sign

DX1 \$29

#### Two-Sided Cone Cap Sign

DX2 \$39

#### Budget Cone Cap Sign, Two-Sided

BU2 \$19

Dozens of sign options available!



### Yard Signs

Affordable, easy to use yard signs are perfect for election day. Weatherproof corrugated plastic with metal frame included. All signage is customizable, inquire for details.

#### One-Sided Yard Sign

YS \$16

#### Two-Sided Yard Sign

YS2 \$20



# BALLOT BOXES DESIGNED FOR EVERY ELECTION CONFIGURATION

Inclusion Solutions' suite of portable Ballot Boxes are ultra-durable and highly secure. Our Fortress Suite ranges from tabletop indoor boxes to our robust weather-resistant ultra-secure Fortress 1000. Stackable Orion boxes and insert bags for easy ballot collection create a product line of boxes that meet all needs.



FORTRESS®  
BALLOT BOXES





# Fortress® Ballot Boxes

Our Fortress® Ballot Boxes are manufactured to be lightweight while maintaining durable structural security. Options range from indoor boxes to our rugged outdoor option.

## Fortress® 1000

Designed to be fastened to static outdoor or indoor structures (i.e. a fence or lighting pole) by the use of its strong padlock and steel cable set.

**FS1000** CALL FOR PRICING



FS1000

## Fortress® 800 and 400

Ideal for indoor use, the Fortress 800 and Fortress 400 are perfect for your office, polling place, vote center, or early voting location.

**FS800** \$215

**FS400** \$150



FS800



FS400

## FORTRESS® ACCESSORIES

### Fortress® Ballot Box Insert Bags

Heavy duty canvas material fits snugly inside your Fortress Ballot Box, allowing for the easy retrieval and storage of submitted ballots.

**FS800-BAG** \$175

**FS400-BAG** \$119



FS400-BAG

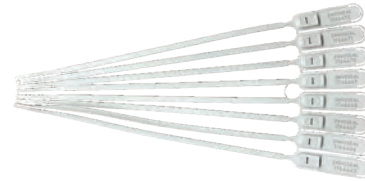


FS800-BAG

### Additional Tamper-Proof Seals

Heavy duty plastic seals secure your Fortress® Ballot Box Insert Bags to prevent tampering. 8 count per box.

**BOXSEAL** \$12



BALLOT BOXES



# Orion® Ballot Boxes

Orion bins are tapered for simple stacked or nested storage. Filled boxes stack safely up to three high.

## Convenience and Security in One Container

- Accommodates padlock, shutter close, and tamper-resistant seals
- Lightweight, portable, and budget-friendly
- Pull handle for easy transport
- Ideal for provisional, early, absentee and election day voting

### Orion® 85 Ballot Box

ORBOX85 \$209

### Orion® 65 Ballot Box

ORBOX65 \$199

### Orion® 50 Ballot Box

ORBOX50 \$99



## Outdoor Ballot Boxes

These low-maintenance, brushed stainless steel ballot drop are designed for permanent installation. Choose from existing vinyl overlay or create your own custom design.

### Small Ballot Drop Box

ASCSM \$2,300

### Medium Ballot Drop Box

ASCMED \$2,975

### Large Ballot Drop Box

Box ASCLG \$3,050



# ALERT SYSTEMS

## BallotCall<sup>®</sup> Alert System

This temporary alert system is ideal for government facilities, permanent polling locations, and private facilities that are outside of your control. BallotCall<sup>®</sup> System comes with:

### Includes BigBell<sup>®</sup> Alert System

- Universally designed wireless alert system
- Oversized touch pad allows users to communicate with ease
- Battery receiver with flashing strobe light can be placed anywhere
- Serves voters with and without disabilities

### Mounting

- Post and bracket provide temporary mounting site for your bell
- Durable base can be mounted on any flat surface

### Exterior Signage

- Sign reading “Ring Bell for Voting Assistance” provides instruction
- Marked with International access symbol

### Storage

- System collapses and fits neatly into a durable, hard case lined with custom protective foam

**BallotCall<sup>®</sup>**  
BCMAX \$625

**Vehicle-Height Extension**  
BCVX \$59



## BigBell<sup>®</sup> Alert System

Designed for permanent installation at inaccessible entrances, our BigBell is a cost-effective alternative to door automation.

### Cost-Effective

- Meets “alternative service” requirements without costly renovations

### Durable and Long Range

- Range up to 1500 feet
- AC plug-in receiver (batteries optional)

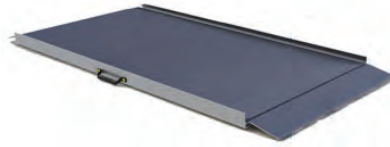
**BigBell<sup>®</sup>**  
BBMAX \$219



# RAMPS

## ElectionSeries™ PATHWAY RAMPS

- 36" wide, 600 lb weight capacity -
- Lightweight for easy, non-permanent setup
- Includes 2" curb as required by ADAAG



### 2' ElectionSeries Pathway Ramp (17 lb)

ESPL2 \$299

### 3' ElectionSeries Pathway Ramp (23 lb)

ESPL3 \$379

### 4' ElectionSeries Pathway Ramp (29 lb)

ES2PL4 \$449

### 5' ElectionSeries Pathway Ramp (35 lb)

ESPL5 \$529

### 6' ElectionSeries Pathway Ramp (41 lb)

ESPL6 \$599

## SignatureSeries™ SUITCASE RAMPS

- 30" wide, 800 lb capacity
- The self-adjusting transition plate enables smoother ground-to-ramp transfers and increased flexibility at various angles.

### 2' SignatureSeries Suitcase Ramp (9 lb)

SS2 \$140

### 4' SignatureSeries Suitcase Ramp (14 lb)

SS4 \$220

### 6' SignatureSeries Suitcase Ramp (30 lb)

SS6 \$300



## SignatureSeries™ PATHWAY RAMPS

- 36" wide, 800 lb capacity
- Our sturdier, extruded aluminum with optional handrails is the best choice for heavy duty use

### 4' SignatureSeries Pathway Ramp (30 lb)

PR4N \$370

### 6' SignatureSeries Pathway Ramp w/ Handrails (80 lb)

P126 \$1100

### 8' SignatureSeries Pathway Ramp w/ Handrails (105 lb)

PR8 \$1290



# BEVELS

## ElectionSeries™ BEVELS

1"H x 36"W Election Series Bevel  
EST10 \$124

1.5"H x 36"W Election Series Bevel  
ES15 \$139

2"H x 36"W Election Series Bevel  
ES20 \$159



## ElectionSeries™ RUBBER BEVELS

.5"H x 41.5"W Rubber Threshold Bevel  
MRAEZ0010 \$50

.75"H x 41.5"W Rubber Threshold Bevel  
MRAEZ0050 \$65

1"H x 41.5"W Rubber Threshold Bevel  
MRAEZ1150 \$105

1.25"H x 41.5"W Rubber Threshold Bevel  
MRAEZ1110 \$115

1.5"H x 41.5"W Rubber Threshold Bevel  
MRAEZ1310 \$185



1.75"H x 41.5"W Rubber Threshold Bevel  
MRAEZ1510 \$210

2"H x 41.5"W Rubber Threshold Bevel  
MRAEZ2100 \$315

2.5"H x 41.5W Rubber Threshold Bevel  
MRAEZ2170 \$376

### LOOKING FOR MORE?

We also offer custom permanent or semi-permanent ramps that comply with ADA specifications. Simply send us photographs of the area in need of a ramp, measure the height of your steps, and contact us for a free custom quote.

**866-232-5487**



# MATTING

## AccessMat™

- Soft mats ideal for grass, sand, mud, or snow
- Portable, lightweight, and durable
- Comes with stakes for securing pathways
- Custom sizes available

### 11' Access Mat (60"W)

AM5-11 \$1535

### 33' AccessMat (60"W)

AM5-33 \$2085



## VersaMat™

- Hard mats ideal for pebbles, hard ground, grass, or stone
- 36" wide path
- Mat locks together for easy assembly
- 0.5" thick 100% polyethylene
- Can support up to 60 ton loads

### 8' VersaMat

VM38 \$439

### 24' VersaMat with Connectors

VM3824 \$1299



### Rubber Matting

Easily smooth over cracks, bumps, or imperfections on your path of travel. Available in custom lengths.

### Rubber Matting (36"W x 36"L)

RBRMAT3 \$37

### Custom Rubber Matting (36"W x custom L)

RBRMATCUST \$12 / foot



Full range of cones and parking signs available!



# MVP SYSTEM

Limit the number of poll workers needed to meet language requirements. MVP® powered by LanguageLine™ solves language access issues for an affordable cost.

## What are MVPs?

- Software to connect voters with interpreters through a video call
- Can be used on any laptop, smartphone, or tablet that is “on-site” at your election office or precinct
- Interpreters for over 200 languages including Spanish and ASL
- Affordable hardware and software plus nominal per-minute cost

### Yearly License (customer supplies iPad)

MVP-Y \$99 + small usage fee

### Lifetime License (customer supplies iPad)

MVP-LF \$399 + small usage fee

### iPad + Lifetime License

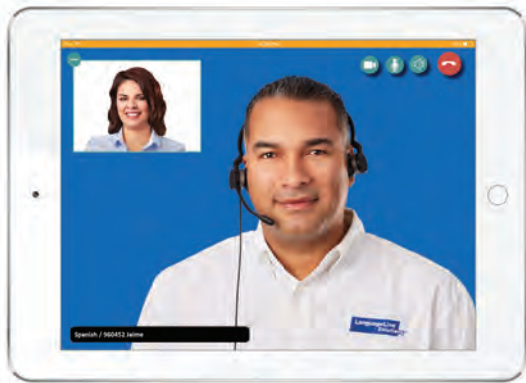
MVP-I \$799 + small usage fee

### Tabletop Stand + iPad + Lifetime License

MVP-T \$1099 + small usage fee

### Deluxe Pedestal Stand with Speakers + iPad + Lifetime License

MVP-D \$2399 + small usage fee



# BUT WAIT, THERE'S MORE!



## ADA SURVEY SOLUTIONS

- Election Site Surveys by our team of election experts, advocates, and attorneys
- AUDITPOLL ADA Survey Software
- ADA Survey Tools, Smart Levels, and more

## ACCESSIBILITY AIDS

- Door Grip Retrofits
- Magnifiers of all sizes
- Pollworker Assistance Buttons
- UV LED Wands + PPE Supplies



## STORAGE + TRANSPORT

- Portable Hand Carts
- Folding Platform Trucks

 866-232-5487



INCLUSIONSOLUTIONS.COM